



## GMIA Airfield Update Newsletter

### June 2014

Greetings!

Thank you for your interest in the latest edition of the General Mitchell International Airport (GMIA) Airfield Update. Now that the weather has improved, there are a number of events that are about to begin that will affect airport operations. As alluded to in the April update, many construction dates were late and in flux due to the harsh Winter, but have since been somewhat firmed up.

Before any construction begins though, there will be the Milwaukee Air and Water Show. This takes place the weekend of June 21st and 22nd. The Blue Angels will be here along with other military and civilian demonstration aircraft. They will begin arriving here on Wednesday the 18th. Additional flights and practice sessions during the day should be anticipated around the airport and city on the days prior to the actual weekend shows.

Immediately following the airshow, Runway 1L/19R (main north/south runway) will be closed for a couple of projects. The first and longest will be from June 23rd through about the first week of August. Runway shoulder work and concrete panel replacement on taxiways parallel to the runway will be done. Later in August there will be daily closures associated with replacement of runway guard lights that warn taxiing pilots that they are about to cross a runway.

Runway 7R/25L (main east/west runway) will also experience daily closures with the resumption of bridge work over Howell Ave. that was begun last year. Construction is slated to begin sometime around August 1st, leading to a total of about two months of daily runway closures. Work will be coordinated with Rwy 1L/19R though, as both will not be closed simultaneously during the overlap in projects. When completed, the bridge will be part of a new airport

perimeter road that will increase safety by allowing airport vehicles to traverse the airport without having to cross an active runway.

Additionally, our Ground Run-up Enclosure (GRE) will be closed sometime in July for a couple of weeks. Concrete panels that have deteriorated will be replaced. Since the work will require closure of the GRE, it should be anticipated that there may be increased noise from aircraft conducting engine maintenance test runs.

Finally, one of the smaller general aviation runways will be closed this Summer as well. Runway 7L/25R will have its asphalt surface replaced. This project is still dependent on grant funding, but is likely to start during the last half of July. Once begun, it will take about five weeks to complete. Because of the smaller aircraft that it is used for, the impact to the surrounding communities will be less noticeable to most.

Thank you for your interest in the activities of GMIA. Any modifications to the above projects will be passed on through this newsletter, so please continue to monitor it over the coming months.

### **Runway 7R/25L**

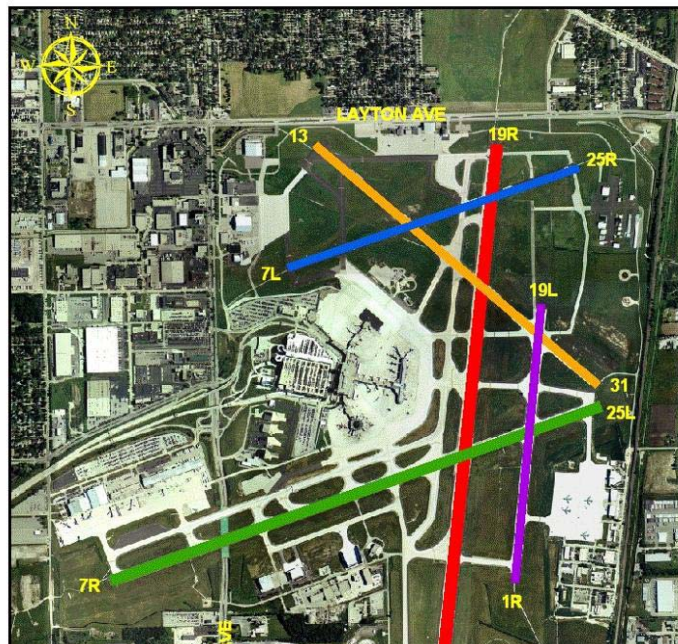
Coordinated daily closures beginning around August 1st for about two months

### **Runway 1L/19R**

Full closure June 23rd through early August, then coordinated daily for the remainder of the month

### **Runway 1R/19L**

Open



**Runway 13/31**

Open

**Runway 7L/25R**

Closed for five weeks  
beginning latter July



MILWAUKEE COUNTY'S



GENERAL  
**MITCHELL**  
INTERNATIONAL AIRPORT