

## GMIA Airfield Update Newsletter

### April 2015

Thank you for your interest in the latest edition of the General Mitchell International Airport (GMIA) Airfield Update. This newsletter is intended to keep you up-to-date on airfield construction projects that could impact the standard flow of air traffic arriving and departing from Mitchell Airport.

As the weather continues to improve, airfield construction and maintenance projects will resume for the season. These projects could result in increased or decreased noise in surrounding neighborhoods.

The main east-west runway, 7R/25L, will be closed from May through mid-July, which means the north-south runway will be the primary commercial runway in use. The north-south runway will close for a separate project later in the year.

Runway 13/31 will be closed for pavement replacement and rehabilitation from late July through September. Runway 7L/25R, a general aviation runway not used by large jets, will also be closed during part of this project.

Lawrence J. Timmerman Airport, a general aviation airport located on Milwaukee's northwest side, will also experience runway construction this year. Runway 4L/22R will be closed for repaving from late May through early August. Timmerman could also see increased air traffic, including more jets, this summer due to construction projects and runway closures at nearby airports. The longest of Timmerman's runways will remain open to accommodate extra air traffic.

The 2015 Milwaukee Air & Water Show, featuring the U.S. Air Force Thunderbirds, is scheduled for July 25th and 26th. The fighter jets will result in increased noise during the event and practices.

Thank you for your interest in the activities of GMIA. If you are not subscribed, please click the "Join Our Mailing List" button at the end of this newsletter.

Enjoy the spring weather!

#### Runway 7R/25L

Closed from early May through mid-July.

#### Runway 1L/19R

Open. Will be closed late July through September.

#### Runway 1R/19L

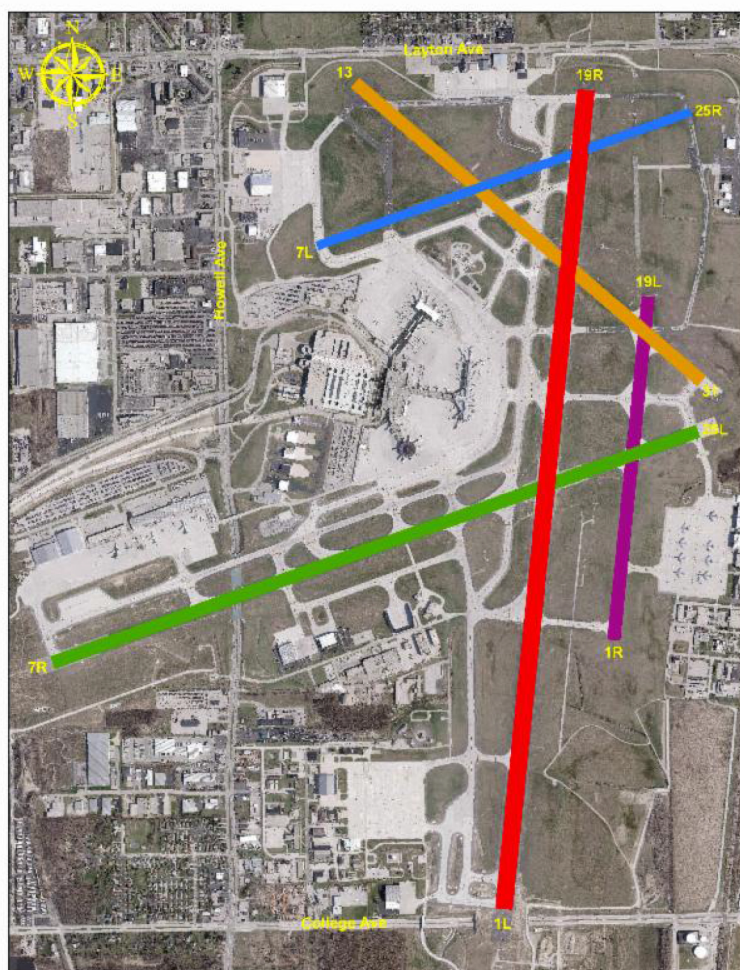
Open.

#### Runway 13/31

Closed late July through September.

#### Runway 7L/25R

Closed late July through mid-August.



Thank you for reading the GMIA Airfield Update Newsletter. Visit our [Airfield Update](#) page for more information. You can sign up to receive future communications by clicking the button below.